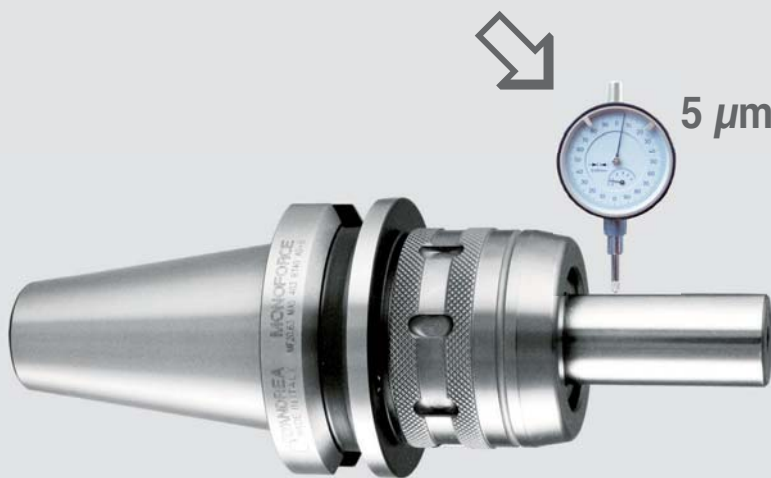


MONOforce

MONOforce represents the ideal and economical solution for the equipment of all machine tools, in particular where there is a need for precision and for clamping tools subjected to high torsional loads.



Built in the version for machine spindles HSK 63 and 100, ISO 26623-1 PSC 63 and 80, as well as DIN 69871 and MAS BT 40 and 50, it allows the use of reduction bushings of Ø 12 mm, Ø 20 mm and Ø 32 mm. It is available in the entire diametral range compatible with these housing diameters for clamping from Ø 3 mm to Ø 25 mm, also SEALED.



DIN 69871 AD

MAS 403 BT AD

DIN 69893 HSK

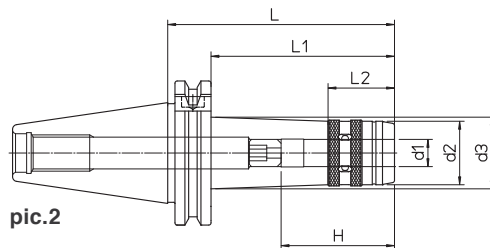
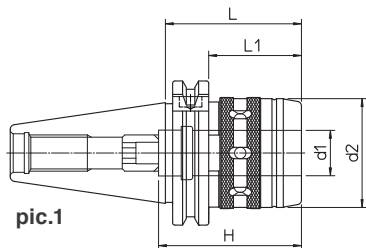
ISO 26623-1 PSC

MAX.	RPM 15.000
------	------------

MAX.	40 BAR
------	--------

HIGH CLAMPING POWER CHUCKS

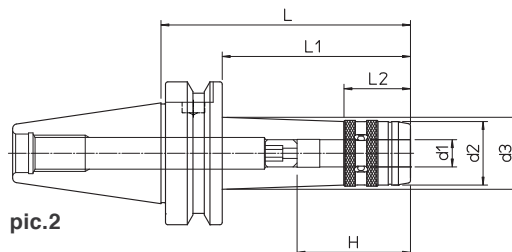
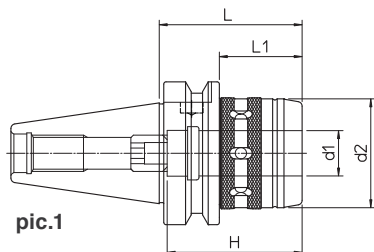
DIN 69871 AD



Without clamping wrench - Chip prearrangement

DIN	REF.	CODE	d1	d2	d3	H	L	L1	L2	kg	pic.
40	DIN69871-AD40 MF12.50	71DIN-A40MF1205	12	28		46	50	31		0.8	1
40	DIN69871-AD40 MF12.100	71DIN-A40MF1210	12	28	32	46	100	81	29.5	1.2	2
40	DIN69871-AD40 MF20.60	71DIN-A40MF2006	20	48		63	60	41		1.1	1
40	DIN69871-AD40 MF20.100	71DIN-A40MF2010	20	48		63	100	81		1.4	2
40	DIN69871-AD40 MF32.95	71DIN-A40MF3209	32	66		80	95			1.6	1
40	DIN69871-AD40 MF32.140	71DIN-A40MF3214	32	66		80	140			2.0	2
50	DIN69871-AD50 MF20.80	71DIN-A50MF2008	20	48		63	80	61		2.3	1
50	DIN69871-AD50 MF20.125	71DIN-A50MF2012	20	48		63	125	106		2.7	2
50	DIN69871-AD50 MF32.75	71DIN-A50MF3207	32	66		90	75	56		2.8	1
50	DIN69871-AD50 MF32.160	71DIN-A50MF3216	32	66		90	160	141		3.2	2

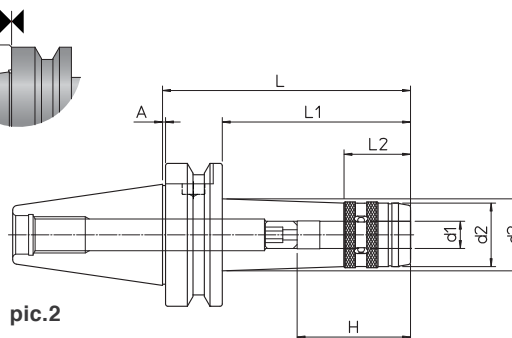
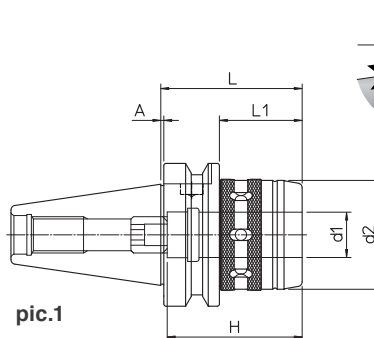
MAS 403 BT AD



Without clamping wrench - Chip prearrangement

BT	REF.	CODE	d1	d2	d3	H	L	L1	L2	kg	pic.
40	MAS403 BT40-AD MF12.60	71MBT-A40MF1206	12	28		46	60	33		0.9	1
40	MAS403 BT40-AD MF12.100	71MBT-A40MF1210	12	28	32	46	100	73	29.5	1.4	2
40	MAS403 BT40-AD MF20.65	71MBT-A40MF2007	20	48		63	65	38		1.3	1
40	MAS403 BT40-AD MF20.100	71MBT-A40MF2010	20	48		63	100	73		1.9	2
40	MAS403 BT40-AD MF32.90	71MBT-A40MF3209	32	66		80	90			2.1	1
40	MAS403 BT40-AD MF32.140	71MBT-A40MF3214	32	66		80	140			3.1	2
50	MAS403 BT50-AD MF20.85	71MBT-A50MF2008	20	48		63	85	47		3.7	1
50	MAS403 BT50-AD MF20.125	71MBT-A50MF2012	20	48		63	125	87		4.1	2
50	MAS403 BT50-AD MF32.95	71MBT-A50MF3209	32	66		90	95	57		4.4	1
50	MAS403 BT50-AD MF32.160	71MBT-A50MF3216	32	66		90	160	122		4.9	2

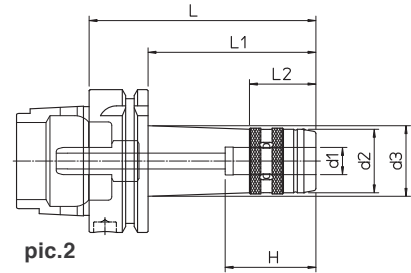
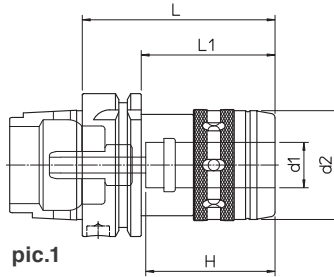
MAS 403 BT AD FACE CONTACT



Without clamping wrench - Chip prearrangement

BT	REF.	CODE	d1	d2	d3	H	A	L	L1	L2	kg	pic.
40	MAS403 BT40-AD FC MF12.100	71MBF-A40MF1210	12	28	32	46	1	100	73	29.5	1.4	2
40	MAS403 BT40-AD FC MF20.65	71MBF-A40MF2007	20	48		63	1	65	38		1.3	1
40	MAS403 BT40-AD FC MF32.90	71MBF-A40MF3209	32	66		80	1	90			2.1	1
50	MAS403 BT50-AD FC MF20.85	71MBF-A50MF2008	20	48		63	1.5	85	47		3.7	1
50	MAS403 BT50-AD FC MF32.95	71MBF-A50MF3209	32	66		90	1.5	95	57		4.4	1

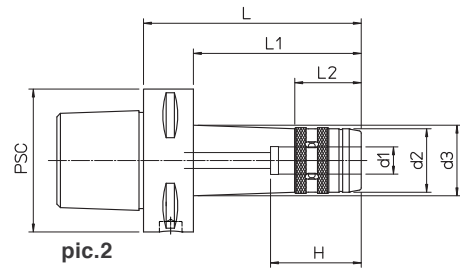
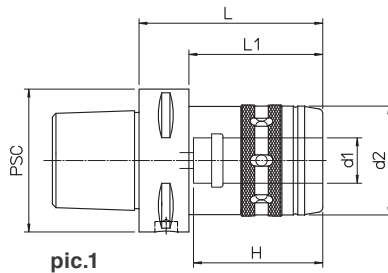
DIN 69893 HSK-A



Supplied with coolant tube - Without clamping wrench - Chip prearrangement

HSK-A	REF.	CODE	d1	d2	d3	H	L	L1	L2	kg	pic.
63	HSK-A63 MF12.70	71HSK-A63MF1207	12	28		46	70	44		0.8	1
63	HSK-A63 MF12.100	71HSK-A63MF1210	12	28	32	46	100	74	29.5	1.1	2
63	HSK-A63 MF20.85	71HSK-A63MF2008	20	48		60	85	59		1.2	1
63	HSK-A63 MF20.125	71HSK-A63MF2012	20	48		60	125	99		1.7	2
63	HSK-A63 MF32.105	71HSK-A63MF3210	32	66		80	105			2	1
63	HSK-A63 MF32.140	71HSK-A63MF3214	32	66		80	140			2.6	2
100	HSK-A100 MF20.95	71HSKA100MF2009	20	48		60	95	66		2.8	1
100	HSK-A100 MF32.110	71HSKA100MF3211	32	66		80	110	81		3.1	1
100	HSK-A100 MF32.160	71HSKA100MF3216	32	66		80	160	131		3.6	1
125	HSK-A125 MF32.120	71HSKA125MF3212	32	66		80	120	91		5.3	1

ISO 26623-1 PSC



Without clamping wrench - Chip prearrangement

PSC	REF.	CODE	d1	d2	d3	H	L	L1	L2	kg	pic.
63	PSC 63 - MF 12.70	71PSC-063MF1207	12	28		46	70	48		0.9	1
63	PSC 63 - MF 12.100	71PSC-063MF1210	12	28	31.5	46	100	78	29.5	1.4	2
63	PSC 63 - MF 20.80	71PSC-063MF2008	20	48		60	80	58		1.3	1
63	PSC 63 - MF 20.120	71PSC-063MF2012	20	48		60	120	98		1.9	2
63	PSC 63 - MF 32.100	71PSC-063MF3210	32	66		80	100			2.1	1
63	PSC 63 - MF 32.140	71PSC-063MF3214	32	66		80	140			3.1	2
80	PSC 80 - MF 20.80	71PSC-080MF2008	20	48		60	80	50		3.7	1
80	PSC 80 - MF 20.125	71PSC-080MF2012	20	48		60	125	95		4.1	2
80	PSC 80 - MF 32.100	71PSC-080MF3210	32	66		80	100	70		4.4	1
80	PSC 80 - MF 32.160	71PSC-080MF3216	32	66		80	160	130		4.9	2

KIT K01 MONOforce 12



1 RC 12.04
1 RC 12.06
1 RC 12.08
1 RC 12.10
1 CHV 28

KIT K01 MONOforce 20



1 RC 20.06
1 RC 20.08
1 RC 20.10
1 RC 20.12
1 RC 20.16
1 CHV 50

KIT K01 MONOforce 32



1 RC 32.06
1 RC 32.08
1 RC 32.10
1 RC 32.12
1 RC 32.16
1 RC 32.20
1 RC 32.25
1 CHV 75

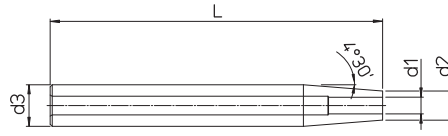
ON REQUEST KIT K01 FACE CONTACT

DIN	REF.	CODE	kg
40	KIT K01 MONOFORCE 12.50 DIN40AD	7KDIN-A40MF1205	1.5
40	KIT K01 MONOFORCE 20.60 DIN40AD	7KDIN-A40MF2006	2
40	KIT K01 MONOFORCE 32.95 DIN40AD	7KDIN-A40MF3209	4.4
50	KIT K01 MONOFORCE 20.80 DIN50AD	7KDIN-A50MF2008	4.6
50	KIT K01 MONOFORCE 32.75 DIN50AD	7KDIN-A50MF3207	6.2

BT	REF.	CODE	Kg.
40	KIT K01 MONOFORCE 12.60 BT40AD	7KMBT-A40MF1206	1.5
40	KIT K01 MONOFORCE 20.65 BT40AD	7KMBT-A40MF2007	2.3
40	KIT K01 MONOFORCE 32.90 BT40AD	7KMBT-A40MF3209	4.6
50	KIT K01 MONOFORCE 20.85 BT50AD	7KMBT-A50MF2008	5.4
50	KIT K01 MONOFORCE 32.95 BT50AD	7KMBT-A50MF3209	7.5

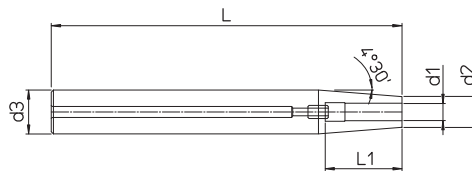
HSK-A	REF.	CODE	Kg.
63	KIT K01 MONOFORCE 12.70 HSK63	7KHSA-A63MF1207	1.5
63	KIT K01 MONOFORCE 20.85 HSK63	7KHSA-A63MF2008	2.3
63	KIT K01 MONOFORCE 32.105 HSK63	7KHSA-A63MF3210	4.5
100	KIT K01 MONOFORCE 32.110 HSK100	7KHSA100MF3211	6.7

PR CT N SHRINK FIT EXTENSIONS



REF.	CODE	d1	d2	d3	L	kg
PR.CT.N D12.03.160	49DC11612030	3	8	12	160	0.09
PR.CT.N D12.04.160	49DC11612040	4	8	12	160	0.09
PR.CT.N D16.03.160	49DC11616030	3	10	16	160	0.14
PR.CT.N D16.04.160	49DC11616040	4	10	16	160	0.14
PR.CT.N D16.05.160	49DC11616050	5	10	16	160	0.15
PR.CT.N D16.06.160	49DC11616060	6	12	16	160	0.16
PR.CT.N D16.08.160	49DC11616080	8	14	16	160	0.16
PR.CT.N D20.05.160	49DC11620050	5	14	20	160	0.27
PR.CT.N D20.06.160	49DC11620060	6	14	20	160	0.26
PR.CT.N D20.08.160	49DC11620080	8	14	20	160	0.26
PR.CT.N D20.10.160	49DC11620100	10	16	20	160	0.21
PR.CT.N D20.12.160	49DC11620120	12	18	20	160	0.22

PR CT R SHRINK FIT EXTENSIONS WITH AXIAL ADJUSTMENT



Supplied with the axial setting screw

REF.	CODE	d1	d2	d3	L	L1	kg
PR.CT.R D16.06.130	49DC21316060	6	10	16	130	22 / 36	0.18
PR.CT.R D16.06.160	49DC21616060	6	10	16	160	22 / 36	0.17
PR.CT.R D20.06.130	49DC21320060	6	14	20	130	22 / 36	0.20
PR.CT.R D20.08.130	49DC21320080	8	14	20	130	22 / 36	0.25
PR.CT.R D20.06.160	49DC21620060	6	14	20	160	22 / 32	0.33
PR.CT.R D20.08.160	49DC21620080	8	14	20	160	26 / 36	0.32
PR.CT.R D25.10.130	49DC21325100	10	20	25	130	31 / 41	0.40
PR.CT.R D25.12.130	49DC21325120	12	20	25	130	36 / 46	0.37
PR.CT.R D25.16.130	49DC21325160	16	22	25	130	39 / 49	0.32
PR.CT.R D25.08.160	49DC21625080	8	19	25	160	26 / 36	0.53
PR.CT.R D25.10.160	49DC21625100	10	20	25	160	31 / 41	0.51
PR.CT.R D25.12.160	49DC21625120	12	20	25	160	36 / 46	0.48
PR.CT.R D25.14.160	49DC21625140	14	22	25	160	36 / 46	0.47
PR.CT.R D25.16.160	49DC21625160	16	22	25	160	39 / 49	0.43
PR.CT.R D25.08.200	49DC22025080	8	19	25	200	26 / 36	0.67
PR.CT.R D25.10.200	49DC22025100	10	20	25	200	31 / 41	0.64
PR.CT.R D25.12.200	49DC22025120	12	20	25	200	36 / 46	0.60
PR.CT.R D25.16.200	49DC22025160	16	22	25	200	39 / 49	0.52
PR.CT.R D32.16.160	49DC21632160	16	27	32	160	39 / 49	0.78
PR.CT.R D32.18.160	49DC21632180	18	27	32	160	39 / 49	0.77
PR.CT.R D32.20.160	49DC21632200	20	27	32	160	41 / 51	0.67
PR.CT.R D32.16.200	49DC22032160	16	27	32	200	39 / 49	1.81
PR.CT.R D32.20.200	49DC22032200	20	27	32	200	41 / 51	0.87

MONOd'

Monolithic tool-holders are the ideal solution to equip any type of machine tool with HSK 63 and 100, DIN 69871 and MAS BT 40 and 50 spindle, guaranteeing the advantages of high quality and precision, at a highly competitive market price.



The MONOd' program includes ER collet chucks, Weldon, shell-mill holders, morse taper.

All the tool-holders are balanced by design, G 6.3 at 8,000 rpm. MONOd' ER G 6.3 at 15,000 rpm.



↗ 0.003

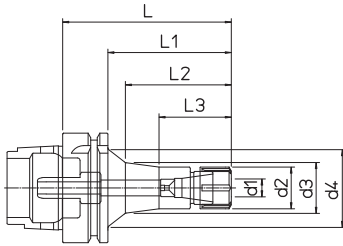
MAX. RPM 15.000

DIN 69893 HSK

DIN 69871

MAS 403 BT

DIN 69893 HSK-A COLLET CHUCK HOLDER - ER DIN 6499

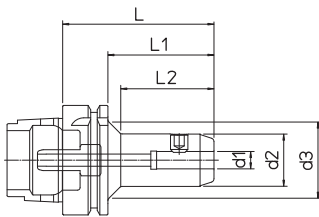


Supplied with coolant tube

HSK-A	REF.	CODE	TYPE	d1	d2	d3	d4	L	L1	L2	L3	kg
63	HSK-A63 ER16.80	71HSKA063ER1608	ER 16 M	0.5 ~ 10	22	32	80	54	41			1.1
63	HSK-A63 ER16.120	71HSKA063ER1612	ER 16 M	0.5 ~ 10	22	31	120	94				1.9
63	HSK-A63 ER25.80	71HSKA063ER2508	ER 25	1 ~ 16	42		80	54				1.3
63	HSK-A63 ER25.140	71HSKA063ER2514	ER 25	1 ~ 16	42	47.5	140	114	46			1.7
63	HSK-A63 ER32.90	71HSKA063ER3209	ER 32	2 ~ 20	50		90	64				1.6
63	HSK-A63 ER32.160	71HSKA063ER3216	ER 32	2 ~ 20	50		160	134				2.2
100	HSK-A100 ER16.100	71HSKA100ER1610	ER 16 M	0.5 ~ 10	22	25	45	100	71	61	41.5	2.3
100	HSK-A100 ER16.160	71HSKA100ER1616	ER 16 M	0.5 ~ 10	22	34.5	44	160	131	126		2.5
100	HSK-A100 ER25.100	71HSKA100ER2510	ER 25	1 ~ 16	42	45.5	100	71	47			2.6
100	HSK-A100 ER25.160	71HSKA100ER2516	ER 25	1 ~ 16	42	49.5	160	131	47			3.2
100	HSK-A100 ER32.120	71HSKA100ER3212	ER 32	2 ~ 20	50	55	120	91	52			3.1
100	HSK-A100 ER32.160	71HSKA100ER3216	ER 32	2 ~ 20	50	56.5	160	131	52			3.7
100	HSK-A100 ER40.120	71HSKA100ER4012	ER 40	3 ~ 26	63	71.5	120	91	60			3.5

Supplied without collets and clamping wrenches

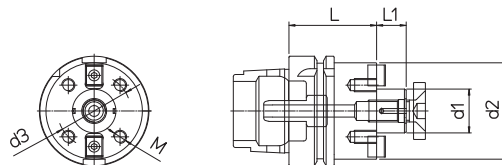
DIN 69893 HSK-A WELDON - WD DIN 1835-B



Supplied with coolant tube

HSK-A	REF.	CODE	d1 ^{H5}	d2	d3	L	L1	L2	kg
63	HSK-A63 WD06.60	71HSKA063WD0606	6	23		60	34		0.8
63	HSK-A63 WD08.65	71HSKA063WD0806	8	26		65	39		0.9
63	HSK-A63 WD10.70	71HSKA063WD1007	10	30		70	44		1.1
63	HSK-A63 WD12.70	71HSKA063WD1207	12	34		70	44		1.2
63	HSK-A63 WD16.80	71HSKA063WD1608	16	42		80	54		1.4
63	HSK-A63 WD20.80	71HSKA063WD2008	20	50		80	54		1.5
63	HSK-A63 WD25.110	71HSKA063WD2511	25	63	110				2.3
63	HSK-A63 WD32.110	71HSKA063WD3211	32	70	110				2.5
100	HSK-A100 WD10.90	71HSKA100WD1009	10	30	45	90	61	53.5	2.3
100	HSK-A100 WD12.100	71HSKA100WD1210	12	34	45	100	71	65.5	2.4
100	HSK-A100 WD16.100	71HSKA100WD1610	16	42	100	71			2.6
100	HSK-A100 WD20.110	71HSKA100WD2011	20	50	110	81			3.1
100	HSK-A100 WD25.120	71HSKA100WD2512	25	63	120	91			3.9
100	HSK-A100 WD32.120	71HSKA100WD3212	32	70	120	91			4.3
100	HSK-A100 WD40.120	71HSKA100WD4012	40	80	120	91			4.8

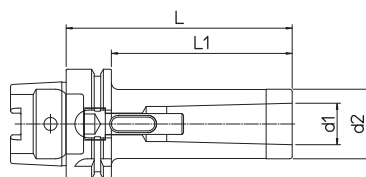
DIN 69893 HSK-A MILL HOLDERS - PF



Supplied with coolant tube

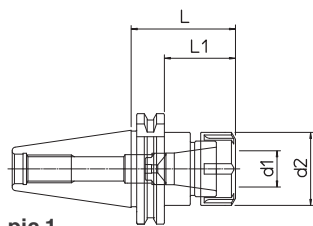
HSK-A	REF.	CODE	d1	d2	d3	M	L	L1	kg
63	HSK-A63 PF16.50	71HSKA063PF1605	16	32			50	17	1.1
63	HSK-A63 PF22.50	71HSKA063PF2205	22	40			50	19	1.2
63	HSK-A63 PF27.55	71HSKA063PF2705	27	50			55	21	1.4
63	HSK-A63 PF32.60	71HSKA063PF3206	32	60			60	24	1.8
100	HSK-A100 PF22.65	71HSKA100PF2265	22	40			65	19	2.3
100	HSK-A100 PF27.65	71HSKA100PF2765	27	50			65	21	2.5
100	HSK-A100 PF32.70	71HSKA100PF3270	32	60			70	24	2.9
100	HSK-A100 PF40.70	71HSKA100PF4070	40	88	66.7	M12	70	27	3.3
100	HSK-A100 PF60.75	71HSKA100PF6075	60	128.5	101.6	M16	75	40	4.2

DIN 69893 HSK-A MORSE - CM DIN 228 AB

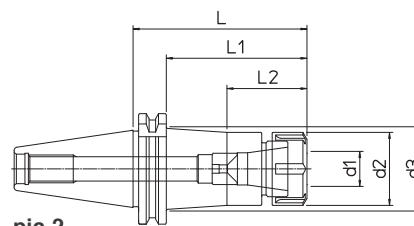


HSK-A	REF.	CODE	MORSE	d1	d2	L	L1	kg
63	HSK-A63 CM2.110 A-B	71HSKA063CMB211	2	17.780	32	110	84	2
63	HSK-A63 CM3.130 A-B	71HSKA063CMB313	3	23.825	40	130	104	2.2
63	HSK-A63 CM4.155 A-B	71HSKA063CMB415	4	31.267	48	155	129	2.6

DIN 69871 AD COLLET CHUCK HOLDER - ER DIN 6499



pic.1

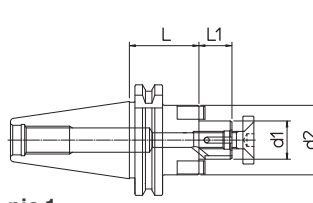


pic.2

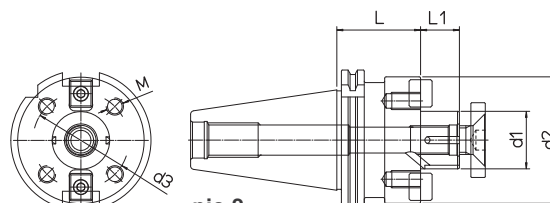
Supplied without collets and clamping wrenches

DIN	REF.	CODE	TYPE	d1	d2	d3	L	L1	L2	kg	pic.
40	DIN69871-AD40 ER16.60	71DIN-A40ER1606	ER 16 M	0.5 ~ 10	22		60	41		0.9	1
40	DIN69871-AD40 ER16.100	71DIN-A40ER1610	ER 16 M	0.5 ~ 10	22	29.5	100	81	41	1	2
40	DIN69871-AD40 ER16.160	71DIN-A40ER1616	ER 16 M	0.5 ~ 10	22	38	160	141	41	2	2
40	DIN69871-AD40 ER25.60	71DIN-A40ER2506	ER 25	1 ~ 16	42		60	41		1.1	1
40	DIN69871-AD40 ER25.100	71DIN-A40ER2510	ER 25	1 ~ 16	42	47	100	81	46	1.6	2
40	DIN69871-AD40 ER25.160	71DIN-A40ER2516	ER 25	1 ~ 16	42	50	160	141	46	2.1	2
40	DIN69871-AD40 ER32.70	71DIN-A40ER3207	ER 32	2 ~ 20	50		70	51		1.2	1
40	DIN69871-AD40 ER32.110	71DIN-A40ER3211	ER 32	2 ~ 20	50		110	91		1.7	1
40	DIN69871-AD40 ER32.160	71DIN-A40ER3216	ER 32	2 ~ 20	50		160	141		2.7	1
40	DIN69871-AD40 ER40.80	71DIN-A40ER4008	ER 40	3 ~ 26	63		80	61		1.3	1
40	DIN69871-AD40 ER40.120	71DIN-A40ER4012	ER 40	3 ~ 26	63		120	101		2.3	1
50	DIN69871-AD50 ER16.100	71DIN-A50ER1610	ER 16 M	0.5 ~ 10	22	29.5	100	81	41	2.5	2
50	DIN69871-AD50 ER16.160	71DIN-A50ER1616	ER 16 M	0.5 ~ 10	22	32.5	160	141	41	3.3	2
50	DIN69871-AD50 ER25.110	71DIN-A50ER2511	ER 25	1 ~ 16	42	48	110	91	46	2.8	2
50	DIN69871-AD50 ER25.160	71DIN-A50ER2516	ER 25	1 ~ 16	42	50	160	141	46	3.6	2
50	DIN69871-AD50 ER32.70	71DIN-A50ER3207	ER 32	2 ~ 20	50		70	51		2.9	1
50	DIN69871-AD50 ER32.110	71DIN-A50ER3211	ER 32	2 ~ 20	50	55	110	91	52	3.4	2
50	DIN69871-AD50 ER32.160	71DIN-A50ER3216	ER 32	2 ~ 20	50	57.5	160	141	52	4	2
50	DIN69871-AD50 ER40.100	71DIN-A50ER4010	ER 40	3 ~ 26	63	65	100	81	55	3.8	2
50	DIN69871-AD50 ER40.160	71DIN-A50ER4016	ER 40	3 ~ 26	63	70	160	141	55	4.3	2

DIN 69871 AD MILL HOLDERS - PF



pic.1



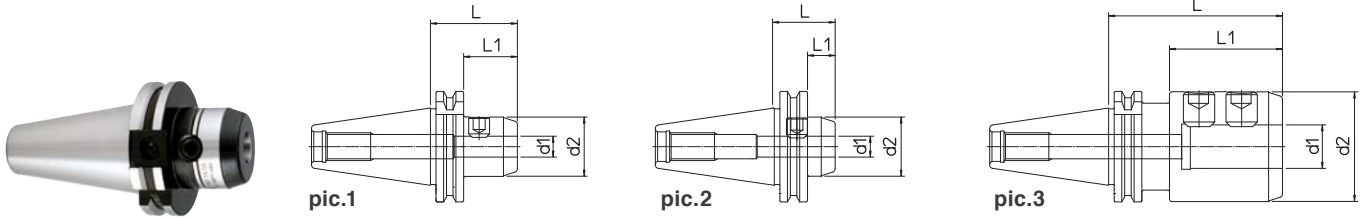
pic.2

DIN	REF.	CODE	d1	d2	d3	M	L	L1	kg	pic.
40	DIN69871-AD40 PF16.35	71DIN-A40PF1603	16	32			35	17	0.9	1
40	DIN69871-AD40 PF22.40	71DIN-A40PF2204	22	40			40	19	1	1
40	DIN69871-AD40 PF27.45	71DIN-A40PF2704	27	50			45	21	1.2	1
40	DIN69871-AD40 PF32.50	71DIN-A40PF3205	32	60			50	24	1.7	1
40	DIN69871-AD40 PF40.55	71DIN-A40PF4005	40	70			55	27	2.1	1
50	DIN69871-AD50 PF16.40	71DIN-A50PF1604	16	32			40	17	2.4	1
50	DIN69871-AD50 PF16.110	71DIN-A50PF1611	16	32			110	17	2.8	1
50	DIN69871-AD50 PF22.45	71DIN-A50PF2204	22	40			45	19	2.6	1
50	DIN69871-AD50 PF27.50	71DIN-A50PF2705	27	50			50	21	2.7	1
50	DIN69871-AD50 PF32.55	71DIN-A50PF3205	32	60			55	24	3.2	1
50	DIN69871-AD50 PF40.60	71DIN-A50PF4006	40	88	66.7	M12	60	27	4.3	2
50	DIN69871-AD50 PF60.70	71DIN-A50PF6007	60	128.5	101.6	M16	70	40	6.6	2

PF.. /40-60 BPS p.57

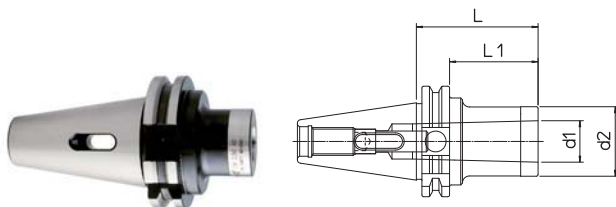
MONOBLOC TOOLHOLDERS

DIN 69871 AD WELDON - WD DIN 1835-B



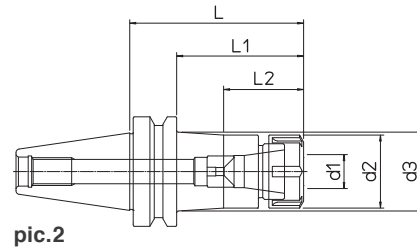
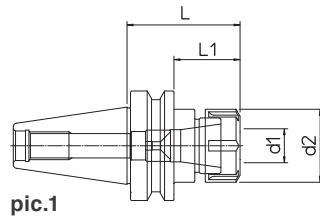
DIN	REF.	CODE	d1 ^{H5}	d2	L	L1	kg	pic.
40	DIN69871-AD40 WD06.50	71DIN-A40WD0605	6	23	50	31	0.8	1
40	DIN69871-AD40 WD08.50	71DIN-A40WD0805	8	26	50	31	0.9	1
40	DIN69871-AD40 WD10.50	71DIN-A40WD1005	10	30	50	31	1	1
40	DIN69871-AD40 WD12.35	71DIN-A40WD1203	12	34	35	16	1	2
40	DIN69871-AD40 WD12.110	71DIN-A40WD1211	12	34	110	91	1.4	1
40	DIN69871-AD40 WD16.35	71DIN-A40WD1603	16	42	35	16	1.1	2
40	DIN69871-AD40 WD16.110	71DIN-A40WD1611	16	42	110	91	1.7	1
40	DIN69871-AD40 WD16.160	71DIN-A40WD1616	16	42	160	141	2.2	1
40	DIN69871-AD40 WD20.35	71DIN-A40WD2003	20	44	35	16	1.2	2
40	DIN69871-AD40 WD20.110	71DIN-A40WD2011	20	50	110	91	2.1	1
40	DIN69871-AD40 WD20.160	71DIN-A40WD2016	20	50	160	141	2.6	1
40	DIN69871-AD40 WD25.35	71DIN-A40WD2503	25	44	35	16	1.3	2
40	DIN69871-AD40 WD25.100	71DIN-A40WD2510	25	63	100	65	2	3
40	DIN69871-AD40 WD25.160	71DIN-A40WD2516	25	63	160	125	3.2	3
40	DIN69871-AD40 WD32.100	71DIN-A40WD3210	32	70	100	65	2.5	3
40	DIN69871-AD40 WD32.160	71DIN-A40WD3216	32	70	160	125	3.9	3
50	DIN69871-AD50 WD10.63	71DIN-A50WD1006	10	30	63	44	2.5	1
50	DIN69871-AD50 WD10.160	71DIN-A50WD1016	10	30	160	141	2.9	1
50	DIN69871-AD50 WD12.63	71DIN-A50WD1206	12	34	63	44	2.6	1
50	DIN69871-AD50 WD12.160	71DIN-A50WD1216	12	34	160	141	3.2	1
50	DIN69871-AD50 WD16.110	71DIN-A50WD1611	16	42	110	91	3.2	1
50	DIN69871-AD50 WD16.160	71DIN-A50WD1616	16	42	160	141	3.7	1
50	DIN69871-AD50 WD20.110	71DIN-A50WD2011	20	50	110	91	3.6	1
50	DIN69871-AD50 WD20.160	71DIN-A50WD2016	20	50	160	141	4.2	1
50	DIN69871-AD50 WD25.80	71DIN-A50WD2508	25	63	80	61	3.5	1
50	DIN69871-AD50 WD25.110	71DIN-A50WD2511	25	63	110	91	4.1	2
50	DIN69871-AD50 WD25.160	71DIN-A50WD2516	25	63	160	141	5.1	2
50	DIN69871-AD50 WD32.100	71DIN-A50WD3210	32	70	100	81	4.6	2
50	DIN69871-AD50 WD32.160	71DIN-A50WD3216	32	70	160	141	6	2
50	DIN69871-AD50 WD40.100	71DIN-A50WD4010	40	80	100	81	4.8	2

DIN 69871 A MORSE - CM DIN 228 AB



DIN	REF.	CODE	MORSE	d1	d2	L	L1	kg
40	DIN69871-A40 CM2.50 A-B	71DIN-40-CMB205	2	17.780	32	50	31	1
40	DIN69871-A40 CM3.70 A-B	71DIN-40-CMB307	3	23.825	40	70	51	1.1
50	DIN69871-A50 CM2.60 A-B	71DIN-50-CMB206	2	17.780	32	60	41	2.6
50	DIN69871-A50 CM3.60 A-B	71DIN-50-CMB306	3	23.825	40	60	41	2.7
50	DIN69871-A50 CM4.80 A-B	71DIN-50-CMB408	4	31.267	48	80	61	2.9

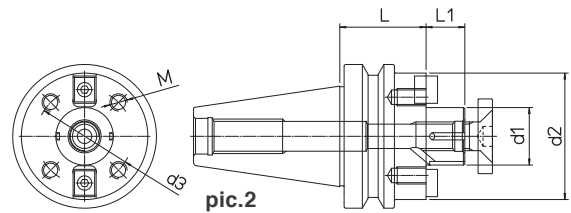
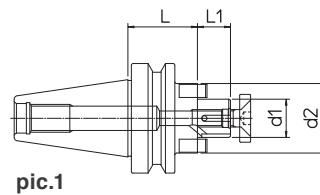
MAS 403 BT40 AD COLLET CHUCK HOLDER - ER DIN 6499



Supplied without collets and clamping wrenches

BT	REF.	CODE	TYPE	d1	d2	d3	L	L1	L2	kg	pic.
40	MAS403 BT40-AD ER16.60	71MBT-A40ER1606	ER 16 M	0.5 ~ 10	22	60	33	1	1		
40	MAS403 BT40-AD ER16.100	71MBT-A40ER1610	ER 16 M	0.5 ~ 10	22	28	100	73	41	1.1	2
40	MAS403 BT40-AD ER16.160	71MBT-A40ER1616	ER 16 M	0.5 ~ 10	22	36.5	160	133	41	2.1	2
40	MAS403 BT40-AD ER25.65	71MBT-A40ER2506	ER 25	1 ~ 16	42	65	38	1.2	1		
40	MAS403 BT40-AD ER25.100	71MBT-A40ER2510	ER 25	1 ~ 16	42	45.5	100	73	46	1.7	2
40	MAS403 BT40-AD ER25.160	71MBT-A40ER2516	ER 25	1 ~ 16	42	49.5	160	133	46	2.2	2
40	MAS403 BT40-AD ER32.70	71MBT-A40ER3207	ER 32	2 ~ 20	50	70	43	1.3	1		
40	MAS403 BT40-AD ER32.110	71MBT-A40ER3211	ER 32	2 ~ 20	50	110	83	1.8	1		
40	MAS403 BT40-AD ER32.160	71MBT-A40ER3216	ER 32	2 ~ 20	50	160	133	2.8	1		
40	MAS403 BT40-AD ER40.80	71MBT-A40ER4008	ER 40	3 ~ 26	63	80	53	1.4	1		
40	MAS403 BT40-AD ER40.120	71MBT-A40ER4012	ER 40	3 ~ 26	63	120	93	2.4	1		
50	MAS403 BT50-AD ER16.100	71MBT-A50ER1610	ER 16 M	0.5 ~ 10	22	26.5	100	62	41	3.6	2
50	MAS403 BT50-AD ER16.160	71MBT-A50ER1616	ER 16 M	0.5 ~ 10	22	31	160	122	41	4.3	2
50	MAS403 BT50-AD ER25.110	71MBT-A50ER2511	ER 25	1 ~ 16	42	45.5	110	72	46	3.8	2
50	MAS403 BT50-AD ER25.160	71MBT-A50ER2516	ER 25	1 ~ 16	42	48.5	160	122	46	4.6	2
50	MAS403 BT50-AD ER32.80	71MBT-A50ER3208	ER 32	2 ~ 20	50	80	42	3.9	1		
50	MAS403 BT50-AD ER32.110	71MBT-A50ER3211	ER 32	2 ~ 20	50	52.5	110	72	52	4.4	2
50	MAS403 BT50-AD ER32.160	71MBT-A50ER3216	ER 32	2 ~ 20	50	56	160	122	52	5	2
50	MAS403 BT50-AD ER40.100	71MBT-A50ER4010	ER 40	3 ~ 26	63	100	62	4.8	1		
50	MAS403 BT50-AD ER40.160	71MBT-A50ER4016	ER 40	3 ~ 26	63	68.5	160	122	55	5.3	2

MAS 403 BT40 AD MILL HOLDERS - PF

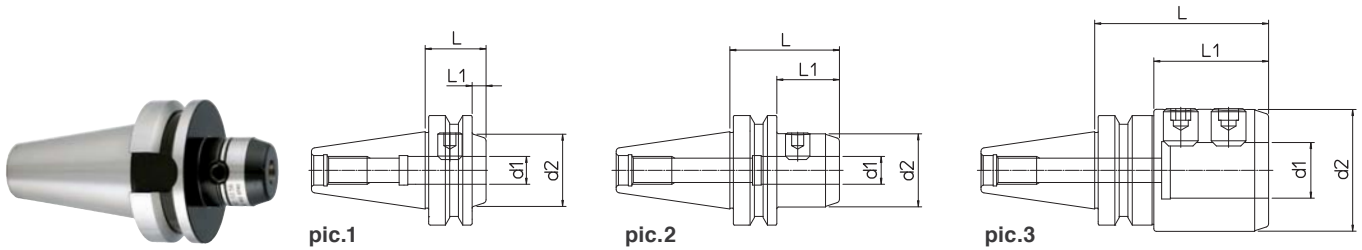


BT	REF.	CODE	d1	d2	d3	M	L	L1	kg	pic.
40	MAS403 BT40-AD PF16.40	71MBT-A40PF1604	16	32			40	17	0.9	1
40	MAS403 BT40-AD PF22.40	71MBT-A40PF2204	22	40			40	19	1	1
40	MAS403 BT40-AD PF27.45	71MBT-A40PF2704	27	50			45	21	1.2	1
40	MAS403 BT40-AD PF32.50	71MBT-A40PF3205	32	60			50	24	1.7	1
40	MAS403 BT40-AD PF40.55	71MBT-A40PF4005	40	70			55	27	2.1	1
50	MAS403 BT50-AD PF16.50	71MBT-A50PF1605	16	32			50	17	2.4	1
50	MAS403 BT50-AD PF22.50	71MBT-A50PF2205	22	40			50	19	2.6	1
50	MAS403 BT50-AD PF27.55	71MBT-A50PF2705	27	50			55	21	2.7	1
50	MAS403 BT50-AD PF32.55	71MBT-A50PF3205	32	60			55	24	3.2	1
50	MAS403 BT50-AD PF40.60	71MBT-A50PF4006	40	88	66.7	M12	60	27	4.3	2
50	MAS403 BT50-AD PF60.80	71MBT-A50PF6008	60	128.5	101.6	M16	80	40	6.8	2

PF.. /40-60 BPS p.57

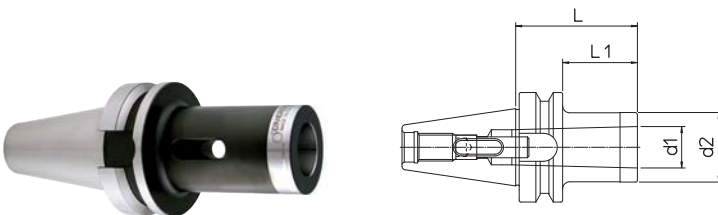
MONOBLOC TOOLHOLDERS

MAS 403 BT40 AD WELDON - WD DIN 1835-B



BT	REF.	CODE	d1 ^{H5}	d2	L	L1	kg	pic.
40	MAS403 BT40-AD WD06.50	71MBT-A40WD0605	6	23	50	23	0.8	1
40	MAS403 BT40-AD WD08.50	71MBT-A40WD0805	8	26	50	23	0.9	1
40	MAS403 BT40-AD WD10.56	71MBT-A40WD1005	10	30	56	29	1	1
40	MAS403 BT40-AD WD12.35	71MBT-A40WD1203	12	34	35	8	0.9	2
40	MAS403 BT40-AD WD12.110	71MBT-A40WD1211	12	34	110	83	1.4	1
40	MAS403 BT40-AD WD16.35	71MBT-A40WD1603	16	42	35	8	1	2
40	MAS403 BT40-AD WD16.110	71MBT-A40WD1611	16	42	110	83	1.7	1
40	MAS403 BT40-AD WD20.35	71MBT-A40WD2003	20	50	35	8	1.1	2
40	MAS403 BT40-AD WD20.110	71MBT-A40WD2011	20	50	110	83	2.1	1
40	MAS403 BT40-AD WD25.35	71MBT-A40WD2503	25	63	35	8	1	2
40	MAS403 BT40-AD WD25.100	71MBT-A40WD2510	25	63	100	73	2	3
40	MAS403 BT40-AD WD32.100	71MBT-A40WD3210	32	70	100	67	2.5	3
50	MAS403 BT50-AD WD10.70	71MBT-A50WD1007	10	30	70	32	3	1
50	MAS403 BT50-AD WD10.160	71MBT-A50WD1016	10	30	160	122	3.4	1
50	MAS403 BT50-AD WD12.70	71MBT-A50WD1207	12	34	70	32	3.1	1
50	MAS403 BT50-AD WD12.160	71MBT-A50WD1216	12	34	160	122	3.6	1
50	MAS403 BT50-AD WD16.80	71MBT-A50WD1608	16	42	80	42	3.3	1
50	MAS403 BT50-AD WD16.110	71MBT-A50WD1611	16	42	110	72	3.5	1
50	MAS403 BT50-AD WD20.80	71MBT-A50WD2008	20	50	80	42	3.5	1
50	MAS403 BT50-AD WD20.110	71MBT-A50WD2011	20	50	110	72	3.8	1
50	MAS403 BT50-AD WD25.100	71MBT-A50WD2510	25	63	100	62	4.5	2
50	MAS403 BT50-AD WD25.125	71MBT-A50WD2512	25	63	125	87	5	2
50	MAS403 BT50-AD WD32.100	71MBT-A50WD3210	32	70	100	62	5.6	2
50	MAS403 BT50-AD WD40.110	71MBT-A50WD4011	40	80	110	72	5.8	2

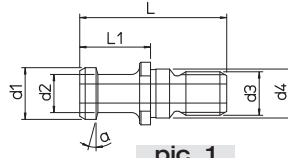
MAS 403 BT40 A MORSE - CM DIN 228 AB



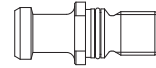
BT	REF.	CODE	MORSE	d1	d2	L	L1	kg
40	MAS403 BT40-A CM2.50 A-B	71MBT-40-CMB205	2	17.780	32	50	23	1
40	MAS403 BT40-A CM3.70 A-B	71MBT-40-CMB307	3	23.825	40	70	43	1.1
50	MAS403 BT50-A CM2.60 A-B	71MBT-50-CMB206	2	17.780	32	60	22	2.6
50	MAS403 BT50-A CM3.60 A-B	71MBT-50-CMB306	3	23.825	40	60	22	2.7
50	MAS403 BT50-A CM4.80 A-B	71MBT-50-CMB408	4	31.267	48	80	42	2.9



ISO 7388/2 A - DIN 69872



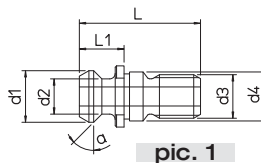
pic. 1



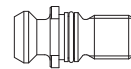
pic. 2

REF.	CODE	ISO	d1	d2	d3	d4	L	L1	a	pic.
ISO 7388/2 A DIN 69872	201430250401	40	19	14	M16	17	54	26	15°	1
ISO 7388/2 A DIN 69872	201430250451	45	23	17	M20	21	65	30	15°	1
ISO 7388/2 A DIN 69872	201430250501	50	28	21	M24	25	74	34	15°	1
ISO 7388/2 A DIN 69872	201430250400	40	19	14	M16	17	54	26	15°	2
ISO 7388/2 A DIN 69872	201430250500	50	28	21	M24	25	74	34	15°	2
ISO 7388/2 A DIN 69872	201430250600	60	40	30	M30	32	90	40	15°	2

ISO 7388/2 B - ANSI B.5 50



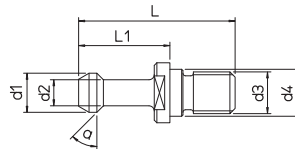
pic. 1



pic. 2

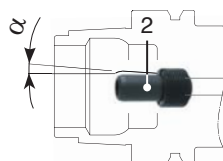
REF.	CODE	ISO	d1	d2	d3	d4	L	L1	a	pic.
ISO 7388/2 B ANSI B.5 50	201430251401	40	18.95	12.95	M16	17	44.50	16.40	45°	1
ISO 7388/2 B ANSI B.5 50	201430251451	45	24.05	16.30	M20	21	56	20.95	45°	1
ISO 7388/2 B ANSI B.5 50	201430251501	50	29.10	19.60	M24	25	65.50	25.55	45°	1
ISO 7388/2 B ANSI B.5 50	201430251400	40	18.95	12.95	M16	17	44.50	16.40	45°	2
ISO 7388/2 B ANSI B.5 50	201430251500	50	29.10	19.60	M24	25	65.50	25.55	45°	2

MAS 403 BT - 30° - 45°



REF.	CODE	ISO	d1	d2	d3	d4	L	L1	a
MAS 403 BT 30°	201430252301	30	11	7	M12	12.5	43	23	30°
MAS 403 BT 30°	201430252401	40	15	10	M16	17	60	35	30°
MAS 403 BT 30°	201430252451	45	19	14	M20	21	70	40	30°
MAS 403 BT 30°	201430252501	50	23	17	M24	25	85	45	30°
MAS 403 BT 30°	201430252601	60	32	24	M30	31	115	65	30°
MAS 403 BT 45°	201430252302	30	11	7	M12	12.5	43	23	45°
MAS 403 BT 45°	201430252402	40	15	10	M16	17	60	35	45°
MAS 403 BT 45°	201430252452	45	19	14	M20	21	70	40	45°
MAS 403 BT 45°	201430252502	50	23	17	M24	25	85	45	45°
MAS 403 BT 45°	201430252602	60	32	24	M30	31	115	65	45°

HSK



REF.	CODE 1	CODE 2	α
HSK-A40	101501101000	382019008001	± 1°
HSK-A50	101501101400	382019010001	± 1°
HSK-A63	101501101600	382019012001	± 1°
HSK-A80	101501101800	382019014001	± 1°
HSK-A100	101501102200	382019016001	± 1°
HSK-A125	101501102800	382019018000	± 1°

ACCESSORIES COLLET - TAP HOLDERS

ET-1- ER TAPPING COLLETS WITH AXIAL COMPENSATION



REF.	CODE	d	D1	L	E	⌀
ET-1-ER25 (M2-M12)	496086125280	2.8	26	34	8	100451012500
ET-1-ER25 (M2-M12)	496086125350	3.5	26	34	8	100451012500
ET-1-ER25 (M2-M12)	496086125450	4.5	26	34	8	100451012500
ET-1-ER25 (M2-M12)	496086125600	6	26	34	8	100451012500
ET-1-ER25 (M2-M12)	496086125700	7	26	34	8	100451012500
ET-1-ER25 (M2-M12)	496086125900	9	26	34	8	100451012500
ET-1-ER32 (M4-M16)	496086132450	4.5	33	43	10	100451033200
ET-1-ER32 (M4-M16)	496086132600	6	33	43	10	100451033200
ET-1-ER32 (M4-M16)	496086132700	7	33	43	10	100451033200
ET-1-ER32 (M4-M16)	496086132900	9	33	43	10	100451033200
ET-1-ER32 (M4-M16)	496086132110	11	33	43	10	100451033200
ET-1-ER32 (M4-M16)	496086132120	12	33	43	10	100451033200
ET-1-ER40 (M8-M20)	496086140600	6	41	54	13	100451034000
ET-1-ER40 (M8-M20)	496086140700	7	41	54	13	100451034000
ET-1-ER40 (M8-M20)	496086140900	9	41	54	13	100451034000
ET-1-ER40 (M8-M20)	496086140110	11	41	54	13	100451034000
ET-1-ER40 (M8-M20)	496086140120	12	41	54	13	100451034000
ET-1-ER40 (M8-M20)	496086140140	14	41	54	13	100451034000
ET-1-ER40 (M8-M20)	496086140160	16	41	54	13	100451034000

On request

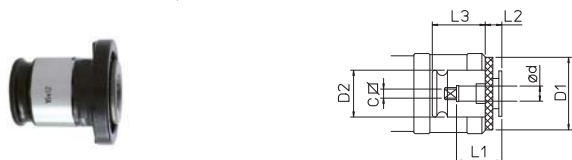
ER - GB TAPPING COLLETS WITHOUT AXIAL COMPENSATION



REF.	CODE	(dxc)	DIN 371	DIN 374-376	D1	L	⌀
ER 16-GB (M4-M10)	496085116045	4.5 x 3.4	M4	M6	16	27.5	100451011600
ER 16-GB (M4-M10)	496085116055	5.5 x 4.3		M7	16	27.5	100451011600
ER 16-GB (M4-M10)	496085116060	6 x 4.9	M5	M8	16	27.5	100451011600
ER 16-GB (M4-M10)	496085116060	6 x 4.9	M6	M8	16	27.5	100451011600
ER 16-GB (M4-M10)	496085116070	7 x 5.5	M6	M10	16	27.5	100451011600
ER 25-GB (M4-M16)	496085125045	4.5 x 3.4	M4	M6	25	34	100451012500
ER 25-GB (M4-M16)	496085125055	5.5 x 4.3		M7	25	34	100451012500
ER 25-GB (M4-M16)	496085125060	6 x 4.9	M5	M8	25	34	100451012500
ER 25-GB (M4-M16)	496085125060	6 x 4.9	M6	M8	25	34	100451012500
ER 25-GB (M4-M16)	496085125070	7 x 5.5		M10	25	34	100451012500
ER 25-GB (M4-M16)	496085125090	9 x 7		M12	25	34	100451012500
ER 25-GB (M4-M16)	496085125110	11 x 9		M14	25	34	100451012500
ER 25-GB (M4-M16)	496085125120	12 x 9		M16	25	34	100451012500
ER 32-GB (M4-M20)	496085132045	4.5 x 3.4	M4	M6	32	40	100451033200
ER 32-GB (M4-M20)	496085132055	5.5 x 4.3		M7	32	40	100451033200
ER 32-GB (M4-M20)	496085132060	6 x 4.9	M5	M8	32	40	100451033200
ER 32-GB (M4-M20)	496085132060	6 x 4.9	M6	M8	32	40	100451033200
ER 32-GB (M4-M20)	496085132070	7 x 5.5		M10	32	40	100451033200
ER 32-GB (M4-M20)	496085132090	9 x 7		M12	32	40	100451033200
ER 32-GB (M4-M20)	496085132110	11 x 9		M14	32	40	100451033200
ER 32-GB (M4-M20)	496085132120	12 x 9		M16	32	40	100451033200
ER 32-GB (M4-M20)	496085132140	14 x 11		M18	32	40	100451033200
ER 32-GB (M4-M20)	496085132160	16 x 12		M20	32	40	100451033200
ER 40-GB (M10-M27)	496085140070	7 x 5.5		M10	40	46	100451034000
ER 40-GB (M10-M27)	496085140090	9 x 7		M12	40	46	100451034000
ER 40-GB (M10-M27)	496085140110	11 x 9		M14	40	46	100451034000
ER 40-GB (M10-M27)	496085140120	12 x 9		M16	40	46	100451034000
ER 40-GB (M10-M27)	496085140140	14 x 11		M18	40	46	100451034000
ER 40-GB (M10-M27)	496085140160	16 x 12		M20	40	46	100451034000
ER 40-GB (M10-M27)	496085140180	18 x 14.5		M22	40	46	100451034000
ER 40-GB (M10-M27)	496085140180	18 x 14.5		M24	40	46	100451034000
ER 40-GB (M10-M27)	496085140200	20 x 16		M27	40	46	100451034000

On request

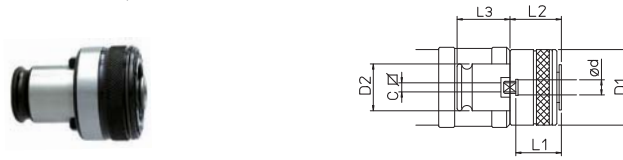
BFC QUICK CHANGE TAP HOLDERS WITHOUT TORQUE CLUTCH



REF.	CODE	(dxc)	DIN 371	DIN 374	DIN 376	D1	D2	L1	L2	L3
BFC1 (M3 - 12)	495061035027	3.5 x 2.7	M3	M5	M5	30	19	17	7	21.5
BFC1 (M3 - 12)	495061045034	4.5 x 3.4	M4	M6	M6	30	19	17	7	21.5
BFC1 (M3 - 12)	495061055043	5.5 x 4.3		M7	M7	30	19	17	7	21.5
BFC1 (M3 - 12)	495061060049	6 x 4.9	M5	M8	M8	30	19	17	7	21.5
BFC1 (M3 - 12)	495061060049	6 x 4.9	M6	M8	M8	30	19	17	7	21.5
BFC1 (M3 - 12)	495061070055	7 x 5.5	M10	M10	M10	30	19	17	7	21.5
BFC1 (M3 - 12)	495061090070	9 x 7	M12	M12	M12	30	19	17	7	21.5
BFC2 (M6 - 20)	495062060049	6 x 4.9	M5	M8	M8	48	31	30	11	35
BFC2 (M6 - 20)	495062060049	6 x 4.9	M6	M8	M8	48	31	30	11	35
BFC2 (M6 - 20)	495062070055	7 x 5.5	M10	M10	M10	48	31	30	11	35
BFC2 (M6 - 20)	495062090070	9 x 7	M12	M12	M12	48	31	30	11	35
BFC2 (M6 - 20)	495062110090	11 x 9	M14	M14	M14	48	31	30	11	35
BFC2 (M6 - 20)	495062120090	12 x 9	M16	M16	M16	48	31	30	11	35
BFC2 (M6 - 20)	495062140110	14 x 11	M18	M18	M18	48	31	30	11	35
BFC2 (M6 - 20)	495062160120	16 x 12	M20	M20	M20	48	31	30	11	35
BFC3 (M14 - 33)	495063110090	11 x 9	M14	M14	M14	70	48	44	14	55.5
BFC3 (M14 - 33)	495063120090	12 x 9	M16	M16	M16	70	48	44	14	55.5
BFC3 (M14 - 33)	495063140110	14 x 11	M18	M18	M18	70	48	44	14	55.5
BFC3 (M14 - 33)	495063160120	16 x 12	M20	M20	M20	70	48	44	14	55.5
BFC3 (M14 - 33)	495063180145	18 x 14.5	M22	M22	M22	70	48	44	14	55.5
BFC3 (M14 - 33)	495063180145	18 x 14.5	M24	M24	M24	70	48	44	14	55.5
BFC3 (M14 - 33)	495063200160	20 x 16	M27	M27	M27	70	48	44	14	55.5
BFC3 (M14 - 33)	495063220180	22 x 18	M30	M30	M30	70	48	44	14	55.5
BFC3 (M14 - 33)	495063250200	25 x 20	M33	M33	M33	70	48	44	14	55.5

On request

BFS QUICK CHANGE TAP HOLDERS WITH TORQUE CLUTCH



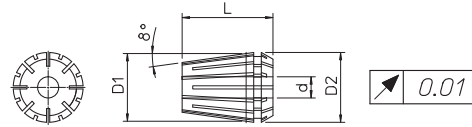
REF.	CODE	(dxc)	DIN 371	DIN 374	DIN 376	D1	D2	L1	L2	L3
BFS1 (M3 - 12)	495071035027	3.5 x 2.7	M3	M5	M5	32	19	17	25	21.5
BFS1 (M3 - 12)	495071040030	4 x 3	M3.5			32	19	17	25	21.5
BFS1 (M3 - 12)	495071045034	4.5 x 3.4	M4	M6	M6	32	19	17	25	21.5
BFS1 (M3 - 12)	495071055043	5.5 x 4.3		M7	M7	32	19	17	25	21.5
BFS1 (M3 - 12)	495071060049	6 x 4.9	M5	M8	M8	32	19	17	25	21.5
BFS1 (M3 - 12)	495071060049	6 x 4.9	M6	M8	M8	32	19	17	25	21.5
BFS1 (M3 - 12)	495071070055	7 x 5.5	M10	M10	M10	32	19	17	25	21.5
BFS1 (M3 - 12)	495071080062	8 x 6.2	M8			32	19	17	25	21.5
BFS1 (M3 - 12)	495071090070	9 x 7		M12	M12	32	19	17	25	21.5
BFS1 (M3 - 12)	495071100080	10 x 8	M10			32	19	17	25	21.5
BFS2 (M6 - 20)	495072060049	6 x 4.9	M5	M8	M8	50	31	30	34	35
BFS2 (M6 - 20)	495072060049	6 x 4.9	M6	M8	M8	50	31	30	34	35
BFS2 (M6 - 20)	495072070055	7 x 5.5	M10	M10	M10	50	31	30	34	35
BFS2 (M6 - 20)	495072080062	8 x 6.2	M8			50	31	30	34	35
BFS2 (M6 - 20)	495072090070	9 x 7		M12	M12	50	31	30	34	35
BFS2 (M6 - 20)	495072100080	10 x 8	M10			50	31	30	34	35
BFS2 (M6 - 20)	495072110090	11 x 9		M14	M14	50	31	30	34	35
BFS2 (M6 - 20)	495072120090	12 x 9		M16	M16	50	31	30	34	35
BFS2 (M6 - 20)	495072140110	14 x 11		M18	M18	50	31	30	34	35
BFS2 (M6 - 20)	495072160120	16 x 12		M20	M20	50	31	30	34	35
BFS3 (M14 - 33)	495073110090	11 x 9	M14	M14	M14	72	48	44	45	55.5
BFS3 (M14 - 33)	495073120090	12 x 9		M16	M16	72	48	44	45	55.5
BFS3 (M14 - 33)	495073140110	14 x 11		M18	M18	72	48	44	45	55.5
BFS3 (M14 - 33)	495073160120	16 x 12		M20	M20	72	48	44	45	55.5
BFS3 (M14 - 33)	495073180145	18 x 14.5	M22	M22	M22	72	48	44	45	55.5
BFS3 (M14 - 33)	495073180145	18 x 14.5	M24	M24	M24	72	48	44	45	55.5
BFS3 (M14 - 33)	495073200160	20 x 16	M27	M27	M27	72	48	44	45	55.5
BFS3 (M14 - 33)	495073220180	22 x 18	M30	M30	M30	72	48	44	45	55.5
BFS3 (M14 - 33)	495073250200	25 x 20	M33	M33	M33	72	48	44	45	55.5

On request



ACCESSORIES ER COLLET

ER DIN 6499-B



REF.	d	D1	D2	L
ER 11	0.5 ~ 7	11	11.5	18
ER 16	0.5 ~ 10	16	17	27.5
ER 20	1 ~ 13	20	21	31.5
ER 25	1 ~ 16	25	26	34
ER 32	2 ~ 20	32	33	40
ER 40	3 ~ 26	40	41	46

RANGE	CODE ER11	CODE ER16	CODE ER20	CODE ER25	CODE ER32	CODE ER40
1 - 0.5	496080111010	496080116010				
1.5 - 1	496080111015	496080116015				
2 - 1			496080120020			
2 - 1.5	496080111020	496080116021		496080125021		
2.5 - 2	496080111025	496080116025				
3 - 2		496080116030	496080120030	496080125030	496080132030	
3 - 2.5	496080111030					
3.5 - 3	496080111035					
4 - 3		496080116040	496080120040	496080125040	496080132040	496080140040
4 - 3.5	496080111040					
4.5 - 4	496080111045					
5 - 4		496080116050	496080120050	496080125050	496080132050	496080140050
5 - 4.5	496080111050					
5.5 - 5	496080111055					
6 - 5		496080116060	496080120060	496080125060	496080132060	496080140060
6 - 5.5	496080111060					
6.5 - 6	496080111065					
7 - 6		496080116070	496080120070	496080125070	496080132070	496080140070
7 - 6.5	496080111070					
8 - 7		496080116080	496080120080	496080125080	496080132080	496080140080
9 - 8		496080116090	496080120090	496080125090	496080132090	496080140090
10 - 9		496080116100	496080120100	496080125100	496080132100	496080140100
11 - 10			496080120110	496080125110	496080132110	496080140110
12 - 11			496080120120	496080125120	496080132120	496080140120
13 - 12			496080120130	496080125130	496080132130	496080140130
14 - 13				496080125140	496080132140	496080140140
15 - 14				496080125150	496080132150	496080140150
16 - 15				496080125160	496080132160	496080140160
17 - 16					496080132170	496080140170
18 - 17					496080132180	496080140180
19 - 18					496080132190	496080140190
20 - 19					496080132200	496080140200
21 - 20						496080140210
22 - 21						496080140220
23 - 22						496080140230
24 - 23						496080140240
25 - 24						496080140250
26 - 25						496080140260

ER collet SEALED supplied upon request

SET ER

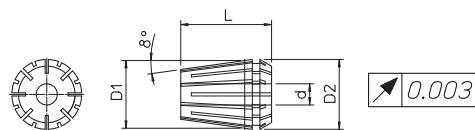


REF.	Ø	CODE
SET ER11/13	0.5 ~ 7	496080111000
SET ER16/10	0.5 ~ 10	496080116000
SET ER20/12	1 ~ 13	496080120000
SET ER25/15	1 ~ 16	496080125000
SET ER32/18	2 ~ 20	496080132000
SET ER40/23	3 ~ 26	496080140000

ACCESSORIES

ER ULTRA-PRECISE COLLET

ER DIN 6499-B



REF.	d	D1	D2	L
ER 16	0.5 ~ 10	16	17	27.5
ER 25	1 ~ 16	25	26	34
ER 32	2 ~ 20	32	33	40
ER 40	3 ~ 26	40	41	46

RANGE	CODE ER16	CODE ER25	CODE ER32	CODE ER40
1 - 0.5	496080016010			
1.5 - 1 •	496080016015			
2 - 1.5	496080016020	496080025020		
2.5 - 2 •	496080016025	496080025025	496080032025	
3 - 2.5	496080016030	496080025030	496080032030	
3.5 - 3 •	496080016035	496080025035	496080032035	
4 - 3.5	496080016040	496080025040	496080032040	496080040040
4.5 - 4 •	496080016045	496080025045	496080032045	496080040045
5 - 4.5	496080016050	496080025050	496080032050	496080040050
5.5 - 5 •	496080016055	496080025055	496080032055	496080040055
6 - 5.5	496080016060	496080025060	496080032060	496080040060
6.5 - 6 •	496080016065	496080025065	496080032065	496080040065
7 - 6.5	496080016070	496080025070	496080032070	496080040070
7.5 - 7 •	496080016075	496080025075	496080032075	496080040075
8 - 7.5	496080016080	496080025080	496080032080	496080040080
8.5 - 8 •	496080016085	496080025085	496080032085	496080040085
9 - 8.5	496080016090	496080025090	496080032090	496080040090
9.5 - 9 •	496080016095	496080025095	496080032095	496080040095
10 - 9.5	496080016100	496080025100	496080032100	496080040100
10.5 - 10 •		496080025105	496080032105	496080040105
11 - 10.5		496080025110	496080032110	496080040110
11.5 - 11 •		496080025115	496080032115	496080040115
12 - 11.5		496080025120	496080032120	496080040120
12.5 - 12 •		496080025125	496080032125	496080040125
13 - 12.5		496080025130	496080032130	496080040130
13.5 - 13 •		496080025135	496080032135	496080040135
14 - 13.5		496080025140	496080032140	496080040140
14.5 - 14 •		496080025145	496080032145	496080040145
15 - 14.5		496080025150	496080032150	496080040150
15.5 - 15 •		496080025155	496080032155	496080040155
16 - 15.5		496080025160	496080032160	496080040160
16.5 - 16 •			496080032165	496080040165
17 - 16.5			496080032170	496080040170
17.5 - 17 •			496080032175	496080040175
18 - 17.5			496080032180	496080040180
18.5 - 18 •			496080032185	496080040185
19 - 18.5			496080032190	496080040190
19.5 - 19 •			496080032195	496080040195
20 - 19.5			496080032200	496080040200
20.5 - 20 •				496080040205
21 - 20.5				496080040210
21.5 - 21 •				496080040215
22 - 21.5				496080040220
22.5 - 22 •				496080040225
23 - 22.5				496080040230
23.5 - 23 •				496080040235
24 - 23.5				496080040240
24.5 - 24 •				496080040245
25 - 24.5				496080040250
25.5 - 25 •				496080040255
26 - 25.5				496080040260

• On request

ER collet SEALED supplied upon request